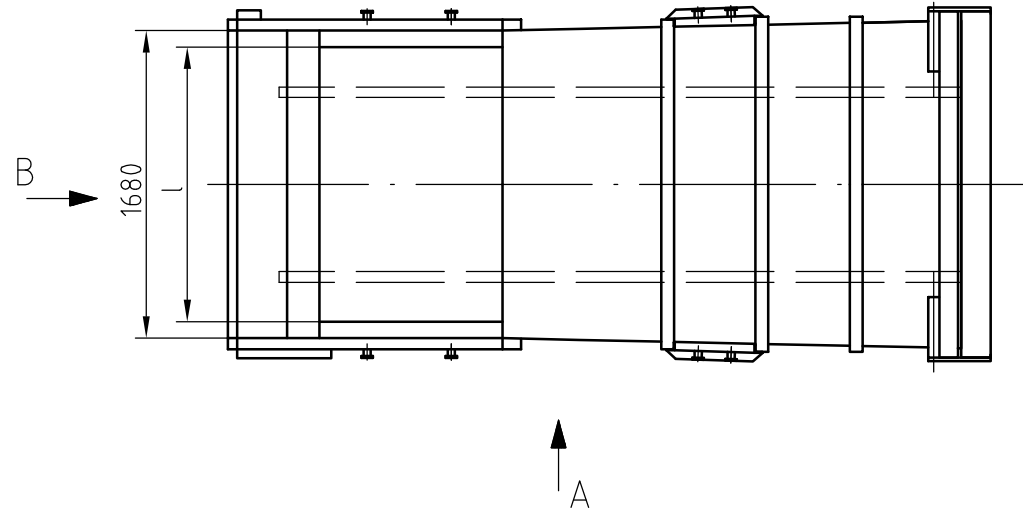
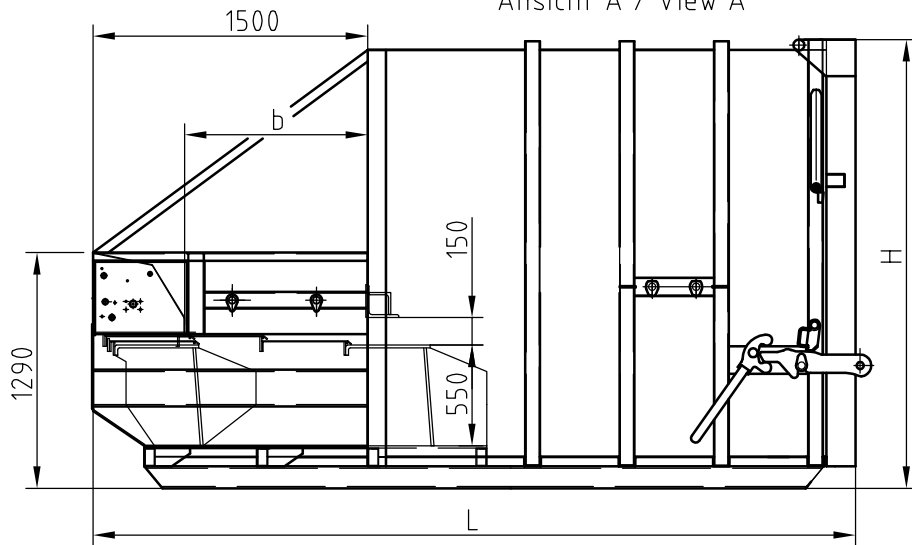
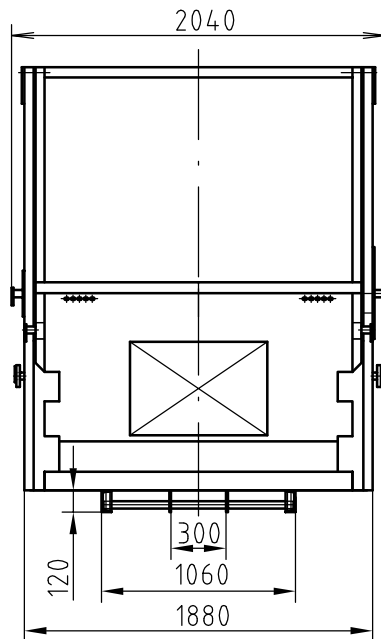


Ansicht A / View A



Ansicht B / View B



**PRESTO**  
for your pressing issues

Selbstpreßcontainer Typ HA			
mobile compactor type HA			
Typ / type		HA 10	HA 12
Inhalt / volume	m <sup>3</sup>	10	12
Länge L / length L	mm	4200	4800
Höhe H / height H	mm	2450	2450
Einfüllöffnung lxb / charge opening lxb	mm	1500 x 1000	
Preßkraft / compacting force	kN	300	
spez. Preßkraft / spec. compacting force	kN/m <sup>2</sup>	370	
Taktzeit / cycle time	s	36	
Maschinengewicht ca. / machine weight, approx.	kg	2700	2900
Motorleistung / motor rating	kW	5,5	
Elektroanschluss / electrical requirements		400V,50Hz,CEE-Stecker,32A,5-polig 400V,50Hz,CEE-plug,32A,5-pole	

Stand Mai 2007 Technische Änderungen vorbehalten.