

BRIQUETTING PRESSES

TH STANDARD SERIES

TH 514 | TH 614 | TH 714 | TH 814
TH 520 | TH 620 | TH 720 | TH 820

SHAPING YOUR WASTE.

THE TH STANDARD SERIES COMPACTS WOOD, POLYSTYRENE, FOAM, LIGHT METALS, PAPER OR BIOMASS.

TH VARIO SERIES

→ Components (presses, hydraulic systems, containers and accessories) are available individually, can be combined with each other or integrated into existing systems



HOPPER

→ With agitator and screw auger // 1400 x 1400 mm or 2000 x 2000 mm for better feeding and higher buffer capacity



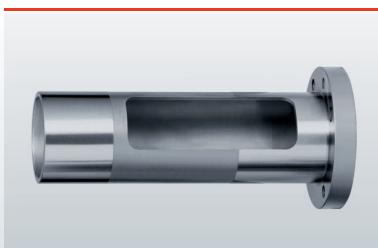
HYDRAULICS WITH SEPARATED OIL TANK

→ Temperature controlled hydraulic system // Valve control // Pump designed for long operating time



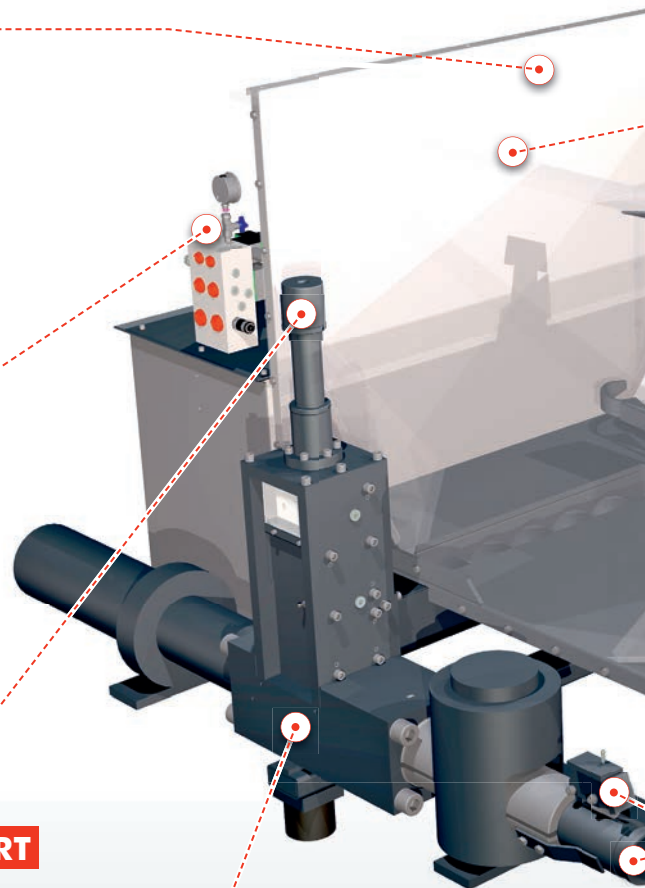
END POSITION CUSHIONED CYLINDER

→ Dustproof and closed dust collection port with end position cushioned cylinder und bolted over // Maintenance-free operation



PRESSING CHAMBER INSERT

→ Prevents wear in pressing zone



YOUR BENEFITS.

- ✓ Optimum use of waste material
- ✓ Briquettes can be sold
- ✓ Transport and storage savings
- ✓ Better burning characteristics than loose swarf
- ✓ Minimum disposal costs
- ✓ Save handling of explosive dust



OIL COOLING

→ Optional feature for multi-shift operation



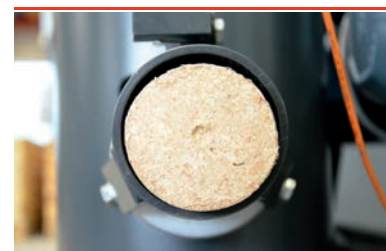
PLC-CONTROL

→ Manual control for unblocking
// International standard parts



BRIQUETTE DIMENSIONS

→ Briquette diameter from 50 mm to 80 mm
// Dependent on machine type

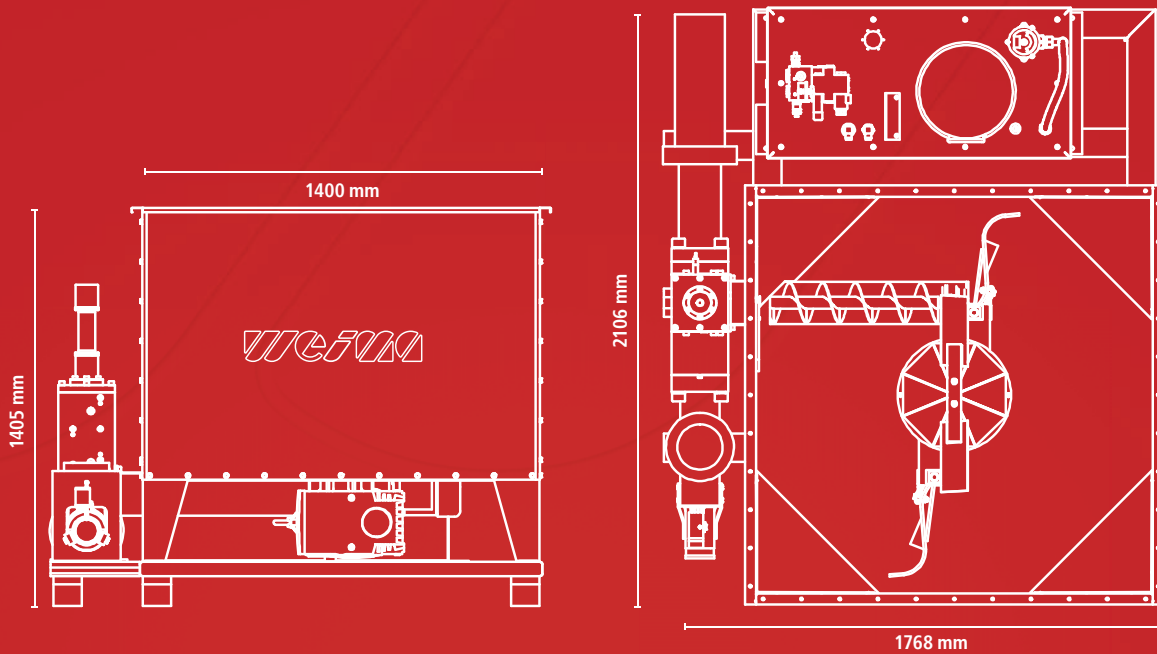


BRIQUETTE LENGTH CONTROL

→ Designed for consistent briquette sizing



TH 714



TECHNICAL SPECIFICATIONS		TH 514/520	TH 614/620	TH 714/720	TH 814/820
Briquette diameter	[mm]	50	60	70	80
Output	[kg/h]	100*	120*	160*	180*
Hydraulic motor	[kW]	7.5	7.5	11	11
Hydraulic oil charge	[l]	160	160	250	250
Weight	[approx. kg]	950/1,100	1,000/1,150	1,100/1,250	1,300/1,500

* Output depends on the type of material. Data is average.